

GRIP02

User Manual

GRIP02

Universal clip

Subject to technical changes.

BRIEF DESCRIPTION

INTENDED USE

The universal clip GRIP02 is part of personal protective equipment (PPE) of category III to prevent falls from heights. In combination with an abseiling device EN 341 or rescue lifting device EN 1496 or a rope setting device EN 12841 Class C, the universal clip serves to rescue a casualty from heights or depths.

The universal clip GRIP02 makes it possible to grab the person that needs to be rescued even if the rescuer cannot reach this person directly.

The universal clip GRIP02 is not designed to arrest a free fall.

The GRIP02 is suitable for the following lanyards:

Textile ropes

- Kernmantel ropes with \varnothing 9–16 mm
- Twisted ropes with \varnothing 16 mm

Shock absorber line

- PYTHONo2 new and ripped

The stated dimensions and materials are the current standard in the market.

Others can be used, if the properties are equivalent or higher.

If there is any doubt, just ask BORNACK.

The universal clip can also be used as a rope ratchet in rope access work positioning procedures or rescue operations. These work procedures are not covered by the User Manual.

Suitable secondary locks must be used according to the work and rescue procedures.

Maximum number of users: 1 person or 2 persons during a rescue operation.

All other uses are deemed improper. The company BORNACK will not be liable for any ensuing damages. The user bears the sole risk.

EQUIPMENT

- Housing flanks made of aluminium
- rotating eccentric clamping cam with ribbing made of aluminium
- Pressure plate made of aluminium
- Lock bolt with ball for housing flank
- Guide prism for housing half
- D-ring for rescue rope / support rope
- D-ring with snap lock
- D-ring for pulley

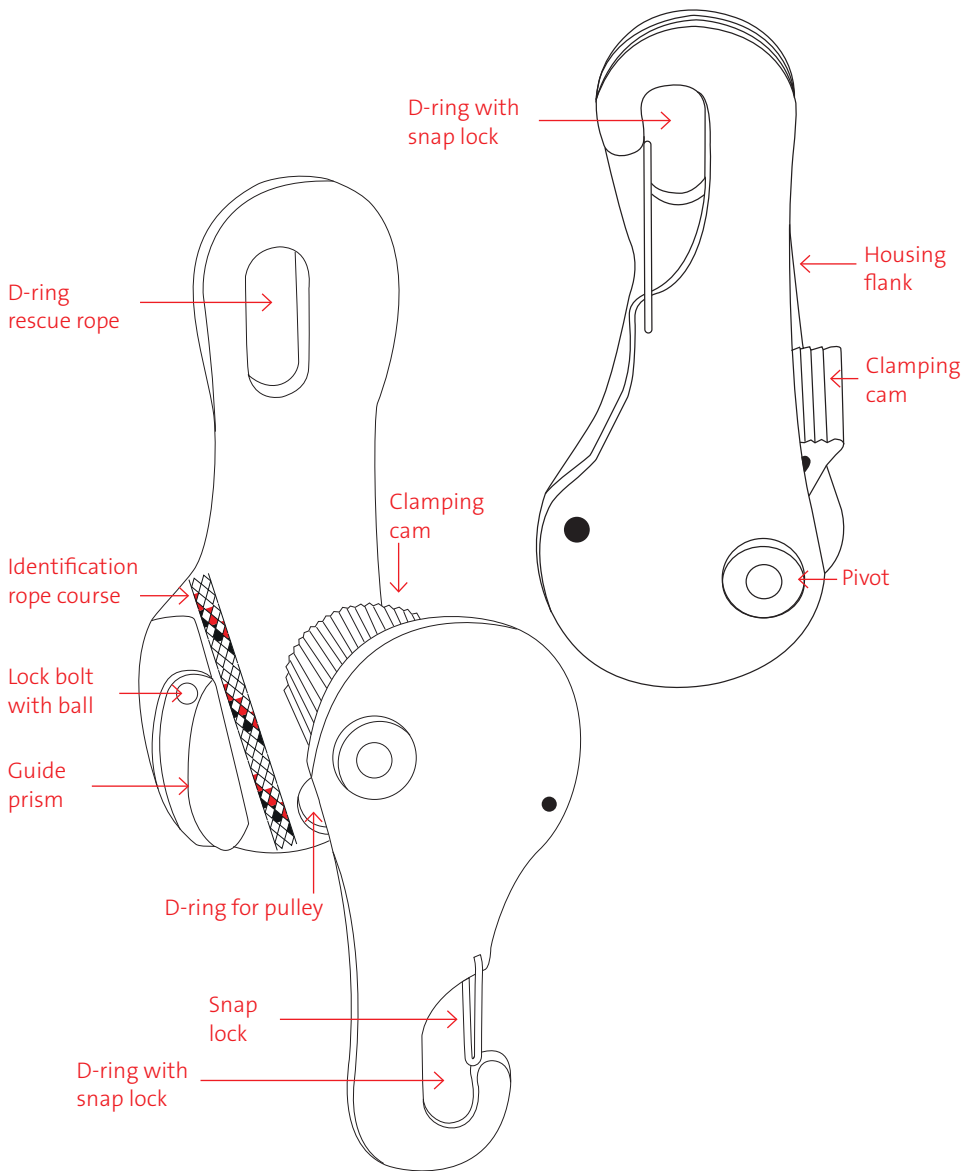
BRIEF DESCRIPTION

USE

- Comrade rescue: rescuing a casualty from rope access equipment by a comrade. Useful load: 1 person.
- Professional users in rescue services: Integration in abseiling or rappelling rescue systems. Useful load 1 person or 2 persons during a rescue operation.
- Integration in rope access work procedures for abseiling or rappelling. Useful load: 1 person.

GRIP02 OPENED

GRIP02 CLOSED



INFORMATION BEFORE USE



Always carry out a visual inspection and test the function every time before and after use!

- The personal protective equipment (PPE) may no longer be used in the case of even very minor faults.
- Faulty PPE components may only be tested or repaired by BORNACK or in a workshop authorised in writing by BORNACK.
- Regular inspections are essential because the safety of the user depends on the efficiency and durability of the PPE.
- The user must have completely read and understood the User Manual before use.
- In case of damage or malfunctions, the device must be immediately withdrawn and not used, and then returned to the manufacturer for inspection.
- Steps must be taken to ensure that the rescue clip on the rescue device is secured with a karabiner to prevent it becoming lost. Falling parts could injure other persons.

VISUAL INSPECTION

- Check that the system is complete. Are all components complete?
- Check that the system is undamaged. No deformations, cracks, breaks etc. of the metal parts. The surface of the clamping cam is not worn (ribbing). The anchor hook of the universal clip is not worn heavily.
- Does the device have any obvious faults?
- The last inspection by an expert was carried out within the past 12 months.
- Identification is legible.

FUNCTION TEST

- Can the universal clip be closed and does the lock click into position?
- Does the pivot run smoothly, is the tolerance is not too large, and is the housing flank centred in the prism guide?
- Does the clamping cam run smoothly?
- Does the clamping cam reset spring work properly?
- Does the clamping function work? (Function test with approx. 10 kg on a rope)

CAUTION: RISK TO LIFE!

Worn universal clips with a defective lock function, it must be withdrawn and replaced!



GRIPO2 IN USE

ATTENTION:

Only use the universal clip under a static load. No dynamic fall loads. No bending load over edges or similar

CAUTION: RISK TO LIFE!

Kaperrettung is not allowed! Always ensure there is a redundant lock!

PREPARATION

A Attachment points for the universal clip or the abseiling rescue device used in combination must be adequately strong, according to EN 795, and should be positioned above / behind the user.

The anchor point for the rope protection must be adequately strong, min. 7.5 kN (for one person) in the rope-pull direction. One additional 1 kN for each additional person. Select an anchor point overhead, if possible.

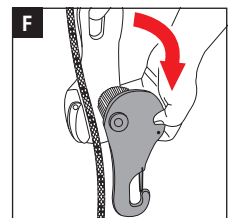
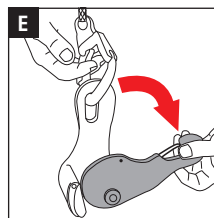
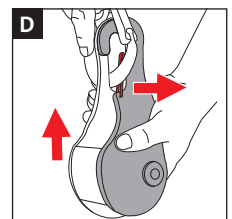
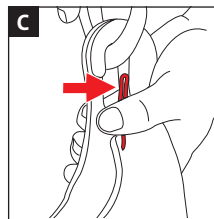
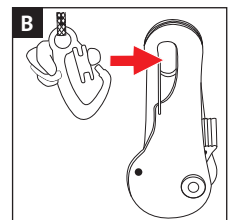
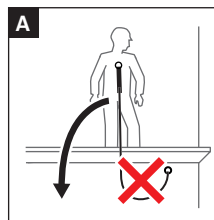
B Hook the safety hook of the rescue device into the D-ring of the GRIPO2 universal clip.

C Open the D-ring of the snap lock to open the universal clip.

D Lift the universal clip and push the housing flank to the side.

E Open the universal clip by turning the housing flank.

F Insert the rope or shock absorber line into the universal clip.



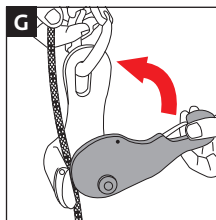
GRIP02 IN USE

G Close the housing flank, and slightly lift the universal clamp.

ATTENTION:



Once closed, check that the safety hook is in the D-ring of both housing flanks and that the snap-lock of the D-ring is closed.



ATTENTION:



The clamp function will not work if the rope is inserted incorrectly.

RESCUE

CAUTION: RISK TO LIFE!



If sand or dirt enter the device, this may impact on its function and cause damage.

ATTENTION:



Check that the universal clip sits correctly.

ATTENTION:



The device or rope may not be pressed or crushed against the building.

ATTENTION:



Kaperrettung is not allowed! Always ensure there is a redundant lock!

Using a rescue device, lift the casualty so that strain on the lanyard under the fall load is relieved.

Observe the User Manual of the rescue device.



GRIP02 IN USE

COMBINATION

When combining this product with other parts, there is a risk of mutual impairment with respect to the function and safety. Compatibility must be assessed during the risk analysis. Only combine with personal protective equipment that bears a CE symbol. If you have any questions about compatibility or you require help with the risk analyses, feel free to contact BORNACK.

SAFETY REGULATIONS

There is a risk to life if these safety instructions are not observed!

- The personal protective equipment (PPE) may no longer be used even in the case of very minor faults.
- Damaged, fall-stressed or dubious personal protective equipment or safety devices must be immediately withdrawn and not used. The equipment may only be inspected by an expert in compliance with DGUV principle 312-906, BORNACK and/or a workshop authorised in writing by BORNACK. This must be documented in the test card.
- Independent modifications or repairs are not allowed.
- Rope protection is part of the personal fall prevention equipment and should be assigned to a specific person.
- The personal protective equipment may only be used by qualified staff that are familiar with the material. They must be proficient in handling the personal protective equipment and must have been briefed about the possible risks associated with its use.
- In accordance with the accident prevention guidelines (UVV), the users of personal protective equipment against falls (Category III) must attend a theoretical training course and a practical training course. Make use of the training competence of the BORNACK training centres: info@bornack.de
- Clothing and shoes must be suitable for the task at hand and the weather conditions.
- Only use if fully fit and healthy.
- Health impairments can jeopardise the safety of the user when working at heights or depths.
- Protect personal protective equipment during storing, use and transportation against the effects of heat (e.g. welding flames or sparks, burning cigarettes) and chemicals (e.g. acids, alkalis, oils, etc.) and mechanical effects (e.g. sharp edges).
- The combinability and protective effect of the PPE must be checked for each hazard situation (risk assessment).
- If a casualty hangs motionless in a full body harness for a longer time, blood cannot flow back from the legs and/or the flow may be interrupted. This can lead to a suspension trauma, a circulatory shock with serious to fatal consequences.
- Before starting work, the responsible person must draw up a plan of rescue measures that defines how to rescue casualties quickly and safely and ensures first aid measures. Casualties must be rescued within 20 minutes. BORNACK can help you draw up tailor-made rescue plans and includes these in the necessary training courses.
E-mail hotline: info@bornack.de
- The local safety guidelines (e.g. in Germany, the DGUV Regulations 112-198 and 112-199 issued by the professional associations) and the accident prevention guidelines for the specific industry (UVV) must be observed.

OTHER

APPROVAL:

Complies with the Regulation (EU) 2016/425 for PPE.

EU type testing (Module B) and production monitoring (Module C2) by:

DEKRA Testing and Certification GmbH
Dinnendahlstr. 9, D-44809 Bochum
CE 0158

Quality management system certified to ISO 9001:2015.

Production monitoring by notified office in accordance with Category III.

Higher safety:

In addition to the requirements of EN 567, the product has also successfully passed other technical tests:

- Static strength of the GRIPo2 device: 12 kN
- Dynamic strength of the GRIPo2 device: 9 kN

REGULAR INSPECTIONS

- This personal protective equipment must be inspected at least once a year by an expert in compliance with DGUV Principle 312-906. The result must be documented in the test card at the end of this User Manual.

SALES

The dealer must ensure that the User Manual is supplied in the language of the designated country. The respective translation must be authorised by BORNACK.

SERVICE

If you have any further questions about this PPE or other BORNACK services, such as:

- Risk assessment analyses
- Rescue plans
- Training courses
- Expert inspections
- Technical inspections
- Maintenance + inspections

please contact our e-mail hotline:
info@bornack.de

We will be happy to help!

OTHER

MAINTENANCE

- If necessary, apply a small amount of oil on the joints so that the moving parts of the karabiner and other devices run smoothly.
- If necessary, apply a small amount of oil on the joints so that the moving parts of the karabiner and other devices run smoothly. If possible, use precision mechanics oil. Ensure that the oil does not come into contact with textile PPE components.
- Maintenance may only be carried out by a qualified expert in compliance with DGUV Principle 312-906. All instructions in this User Manual must be strictly observed.
- Protective equipment that is clean and well looked after will last longer!

CLEANING

- Dry damp personal protective equipment in the air, not on artificial heat sources. Dry metal components with cloths.
- Clean soiled textile components (e.g. arrester harnesses and ropes) with lukewarm water and a little detergent for delicates. Then rinse carefully and allow to dry in the air. Other cleaning agents are not allowed!
- If disinfection is necessary, please contact the e-mail hotline:
- info@bornack.de
- If the personal protective equipment comes into contact with salt-water, keep it wet until it can be rinsed with plenty of distilled water.
- Use compressed air to blow on the unit if necessary.

LIFE SPAN

Metal parts are not subject to age-related life span deadlines. The expert makes a decision based on his technical expertise and the latest version of the standard.

Rope changes in locking systems that work with a rope friction principle (abseiling devices, rope shortening devices, shock absorber, etc.) can impact on the function and make premature replacement necessary.

For reasons of safety, intensive use and/or extreme application conditions such as sharp edges, chemical influences, UV-radiation etc. will reduce the usage period. The company owner needs to take this into account in the workplace risk analysis.

The company owner must ensure compliance with the maximum usage period by documenting first-time use in the test card.

The test card at the end of this User Manual must be presented during the regular expert inspections and be completed by an expert.

For more details, please visit www.bornack.de.

REPAIRS

- For reasons of liability, repairs may only be carried out by BORNACK or in a workshop authorised in writing by BORNACK.
- Only original spare parts from the manufacturer may be used.

OTHER

STORAGE

- Dry wet PPE **before** storage.
- Store in a dry place away from direct sunlight.
- Do not store PPE near radiators. Permanent exposure to temperatures above +50 °C has a negative impact on the strength of the textile material and shortens the life span.
- Do not allow PPE to come into contact with aggressive substances (e.g. oils, grease, acids, chemicals etc.).
- Protected storage in the device case or device bag.

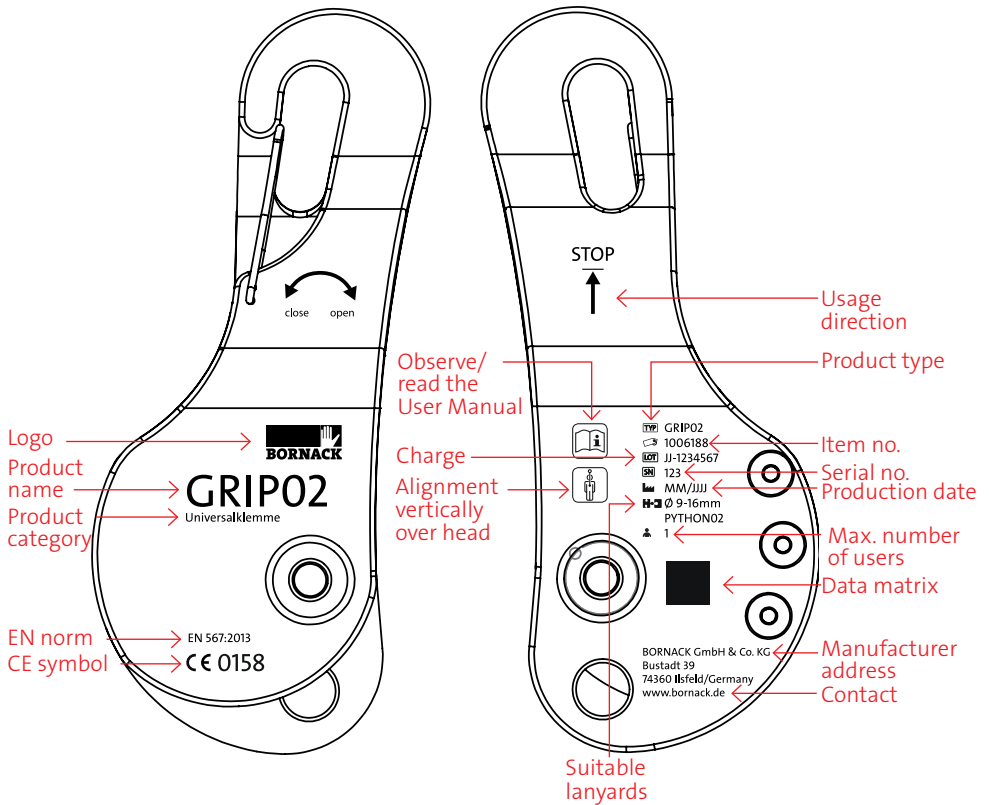
TRANSPORT

- Protected transport in the device case or device bag.

OTHER

PRODUCT IDENTIFICATION

The following identification is on the product:





TEST CARD

FOR ANNUAL MONITORING

The test list must be completed in full by the expert during the annual inspection.

This test list does not claim to cover all test criteria and does not relieve the expert from his decision about the overall condition.

Type product name: _____

Production date: _____

Charge No.: _____ Serial No.: _____

Purchase date: _____

Date of first Use: _____

Maximum life span until: _____

	Date	Signature	Next inspection	Reason for inspection
Year 1				
Year 2				
Year 3				
Year 4				
Year 5				
Year 6				
Year 7				
Year 8				
Year 9				
Year 10				

TEST CARD

FOR ANNUAL MONITORING

Please complete:

	Year 1	Year 2	Year 3	Year 4	Year 5	Year 6	Year 7	Year 8	Year 9	Year 10
Complete?										
No soiling?										
No cracks or deformation?										
No corrosion damage?										
No wear or similar?										
No foreign bodies in/on moving parts?										
Housing closes without friction?										
Low lateral play at the side of the housing halves?										
Are the screw connections tight?										
Spring snapper moves smoothly and sits tightly?										
Rivet heads undamaged?										
Do the rivets sit tightly?										
Important: is there any wear on the ribbed surface of the clamping cam?										
Clamping cam runs smoothly?										

Continued on the next page

EU DECLARATION OF CONFORMITY



EU Declaration of Conformity

The manufacturer or his authorised representative established within the EU

BORNACK GmbH & Co. KG
Bustadt 39
74360 Ilsfeld
Germany

hereby declares that the following personal protective equipment

Universal clamp
GRIP02

- is in conformity with the relevant harmonisation legislation according to Annex V (Module B) of the Regulation (EU) 2016/425 on personal protective equipment according to Article 19 (category III PPE) and is examined to **EN 567:2013**
- is identical to the PPE that is the object of the **EU type-examination certificate No. ZP/B213/19**

issued by

DEKRA Testing and Certification GmbH
Dinnendahlstraße 9
44809 Bochum
Germany
CE 0158

- is subject to the assessment of conformity to type, based on internal production control plus supervised product checks according to Module C2 of the Regulation (EU) 2016/425 for personal protective equipment (category III PPE), monitored by the notified body

DEKRA Testing and Certification GmbH
Dinnendahlstraße 9
44809 Bochum
Germany
CE 0158

6 November 2019

BORNACK GmbH & Co. KG

Klaus Bornack
Managing Director

A handwritten signature in blue ink, appearing to read 'K Bornack', written over a light blue grid background.



FALLSTOP

Safety equipment for securing and rescuing at heights and depths

SAFEPOINT

Planning and assembly of stationary securing systems

BORNACK GmbH & Co. KG

Bustadt 39
74360 Ilsfeld
Germany

Tel + 49 (0) 70 62 / 26 90 0-0
Fax + 49 (0) 70 62 / 26 90 0-550
info@bornack.de
www.bornack.de

© BORNACK – Subject to technical changes
Reprinting or duplication, even of excerpts, is only permitted
with written consent
Status: 07/2021 GAL Art.-No. 8000138_EN ebo/jba

